

VETVIEW
VXV
Console

Console Software for Digital Radiography System.

VETVIEW
VXV
Console





VetView Console is a console software program that helps to acquire, manage and process diagnostic digital x-ray images.



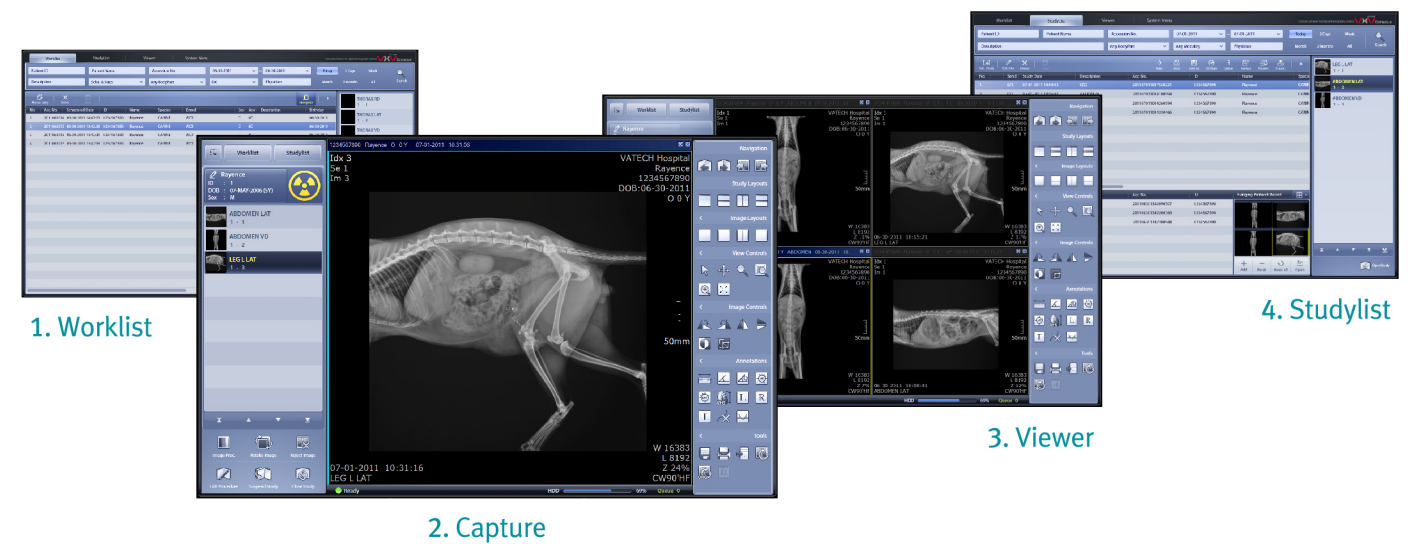
Advanced Workflow & Intuitive GUI

© All-In-One Workstation Software

VetView Console is a Complete Image Management Software Featuring Easy data Searching, Fast Image Acquisition, and User Friendly Functions such as Image Viewing, Reprocessing, Optimizing and Archiving.

© Intuitive GUI

- Intuitive and Direct Graphic User Interface with X-ray Detector
- Optimized Exposure Conditions and Image Review
- Reducing Unnecessary Rework and Test



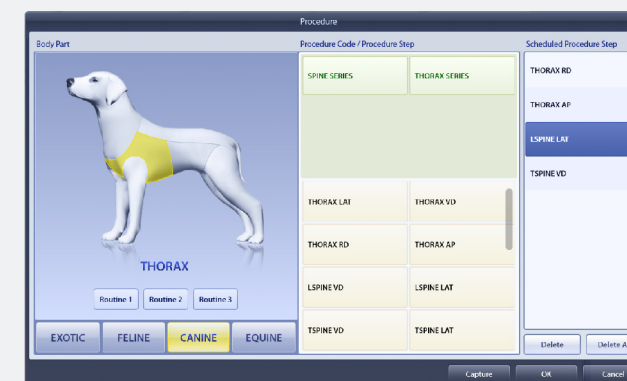
1. Worklist

2. Capture

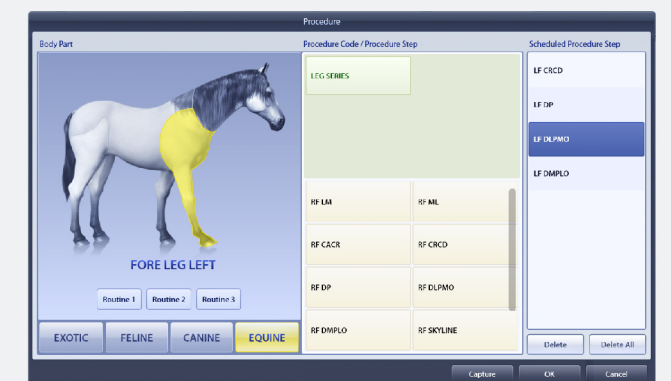
3. Viewer

4. Studylist

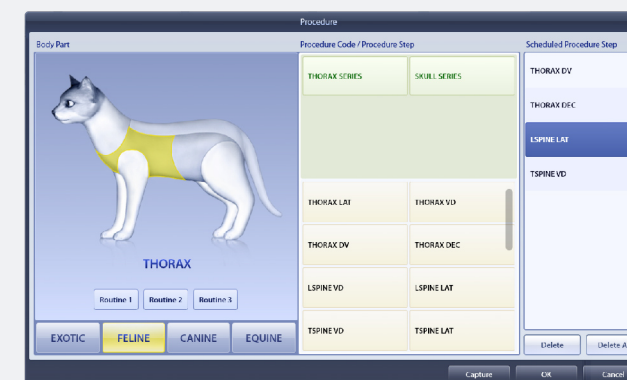
5. Edit Procedure (BodyPart)



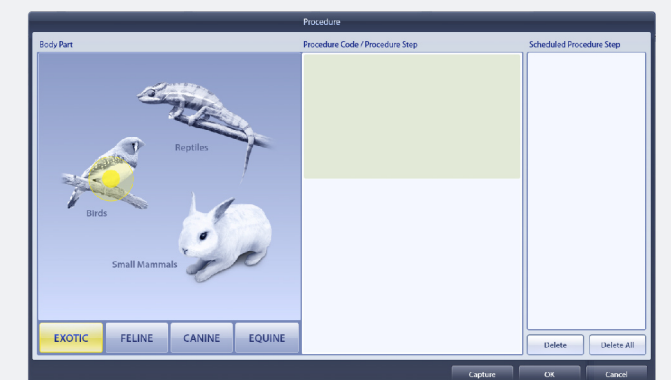
Canine



Equine



Feline

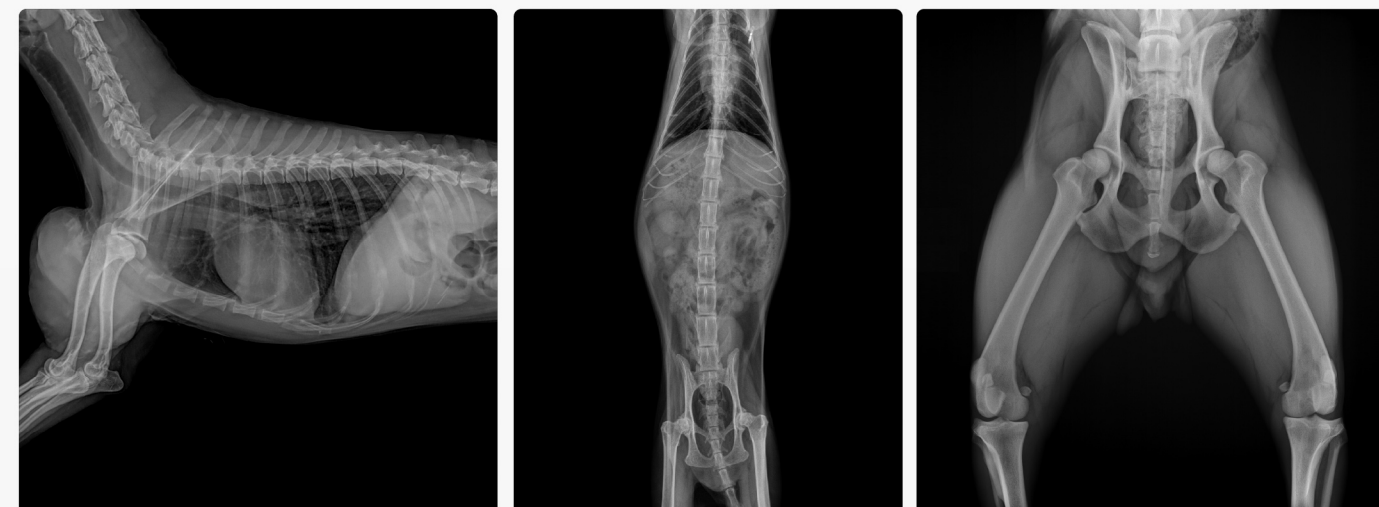


Exotic

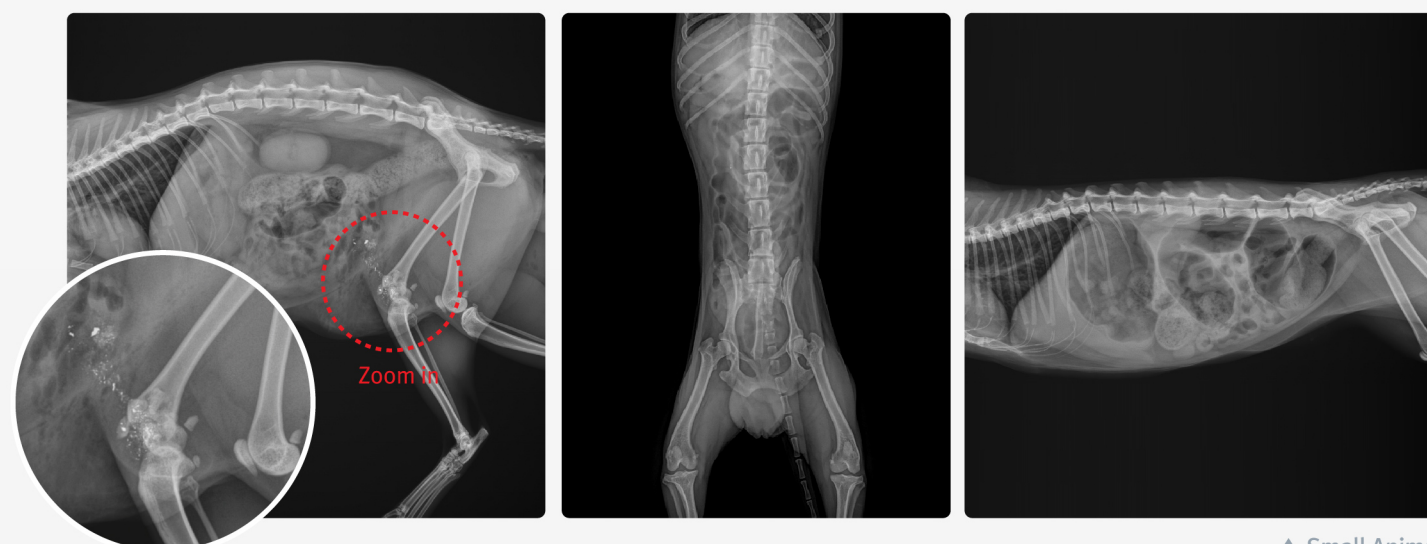


Image Processing

- Perfect Image Acquisition (No Adjustment Required)
- Integration Software for Automatic Image Optimization
- Professional Image Processing for Diagnostic Use
- Easy Observation for Bones and Microstructures
- Noise Suppression



▲ Small Animal



▲ Small Animal



▲ Reptiles



VetView Console is an operational software for image acquisition and image processing, and performs in connection with flat panel detector and x-ray generator. Its data archives enable users to get access to patient history management, case study and image searches. VetView Console is designed for user friendly environment such as DICOM compliant, large data processing as well as effective work flows.



“Leading the Transition
 to Digital X-ray”

Main Features

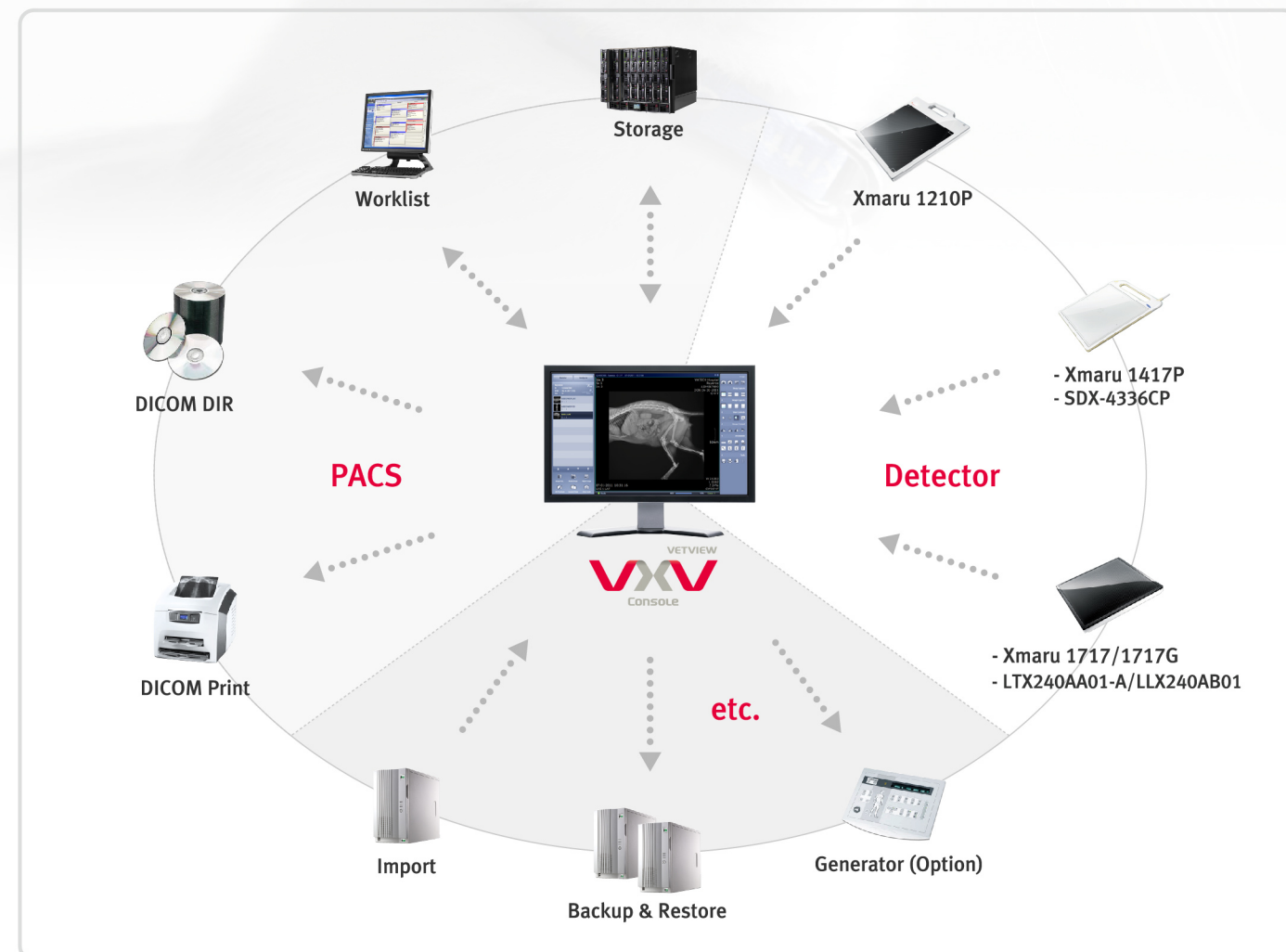
Basic Functions

- DICOM File Management
- DICOM 3.0 Supportive
- Transmit Images to PACS Server
- DICOM Printing
- DICOM Worklist
- CD Burning with CD Viewer
- Client(miniPACS)

- Image Magnification
- Display the Studied Images Side-by-Side
- Measuring the Length and Angles of the Image
- Adding Annotation Text, Graphics and Electronic Markers to an Image
- Data Backup & Restore

Optional Function

- Generator Control



Multi Language (English, Chinese, Japanese, German, French, Spanish)

Spanish

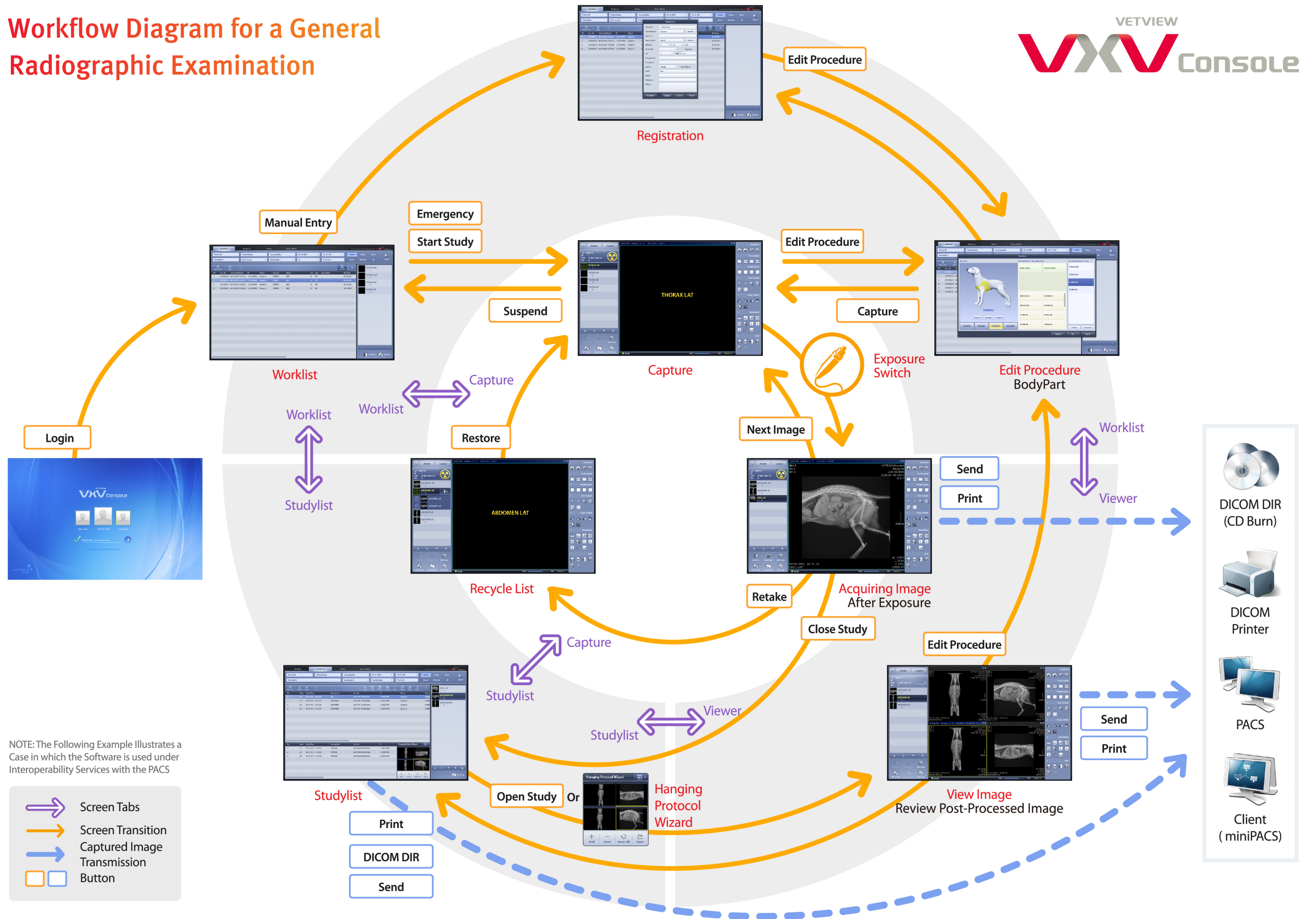
Chinese

German

System Requirements

Monitor Resolution (w x h)	1280 x 768 (Minimum) 1680 x 1050 1920 x 1080 (Optimized)
CPU	Intel Core2Duo E4400 or more fast
Memory	2GB or more 4GB (Optimized)
Video Card	Intel GMA 950 or more Intel GMA X3500 or more Nvidia Geforce FX5200 or more ATI Radeon 9000 or more 512MB or more (No Shared Memory)
Operating System	Windows XP SP3 Windows VISTA (32bit) Home or Business Windows 7 (32bit / 64bit) Professional

Workflow Diagram for a General Radiographic Examination



NOTE: The Following Example Illustrates a Case in which the Software is used under Interoperability Services with the PACS

- Screen Tabs
- Screen Transition
- Captured Image Transmission
- Button
- Button

- DICOM DIR (CD Burn)
- DICOM Printer
- PACS
- Client (miniPACS)