

# DIAGNOSTIC SCANNER Linear Ultrasonic System HS-103V

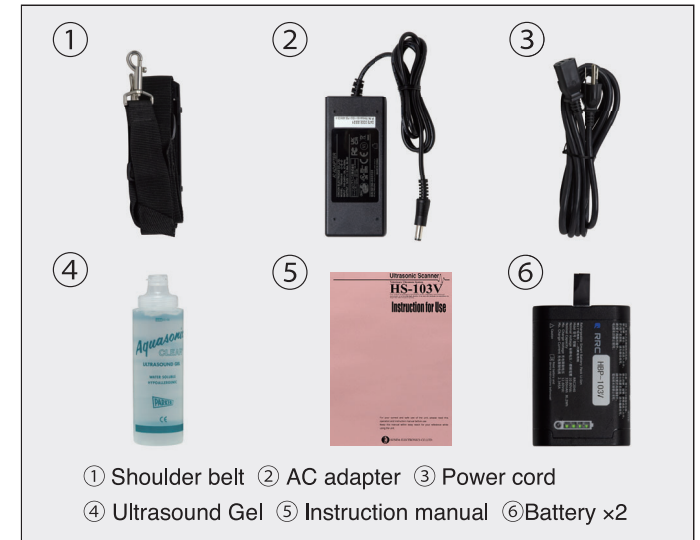
**DIMENSIONS**



**SPECIFICATIONS**

<b>Channel</b>	96 channels
<b>Display Monitor</b>	6.5 inch (640 x 480 VGA)
<b>Display Mode</b>	B-mode
<b>Doppler</b>	CFM (Color Flow Mapping), PD (Power Doppler)
<b>Range</b>	HCS-236M : 2 cm ~ 24 cm (1 cm step) HLV-275M : 2 cm ~ 16 cm (1 cm step)
<b>Ultrasound Frequency Rate</b>	3.5 to 10.0 MHz
<b>Acoustic Power</b>	20 to 100% (10% step)
<b>Image Adjustment</b>	B-Gain : 36 to 100 dB (1 dB step) B Dynamic Range : 35 to 95 dB (1 dB step) Doppler-gain : 35 to 100 (5 step) Doppler Speed Range : 1/2, 1, 2, 4, 8, 16 γcorrection : 2 types H-res : OFF, Detail1, Detail2, (Image Enhancement) Detail3, Mild, Resolution Penetration, Clarity, Boundary, Anatomy Soft : Off, 1 ~ 4 levels Edge : Off, 1 ~ 3 levels
<b>Measurement Function</b>	Distance, Circumference, Histogram, Cattle Pregnancy weeks (CRL)
<b>Data Storage</b>	Still Image (JPEG) : Internal 200 image max Movie Image(AVI) : Internal 10 image max
<b>External I/O</b>	DVI port, USB port
<b>IPX</b>	IPX1
<b>Power Source</b>	DC 10.8 V
<b>Dimension</b>	184 mm(W) x 260 mm(H) x 60 mm(D)
<b>Net Weight</b>	1.8 kg (Including Probe, Battery and Shoulder belt)
<b>Probes</b>	Convex Probe (5.0 / 3.5 / 2.8 MHz 60R) HCS-236M Linear Probe (Rectal) 10.0 / 7.5 / 5.0 MHz 50 mm HLV-275M

**ACCESSORIES**



**OPTIONS**



**6.5 inch**



**LCD Brightness  
1000 cd/m<sup>2</sup>**

Attention  
 •Contents of this catalog are as of February 14, 2024  
 •The specification and appearance are subject to change without notice for improvement.  
 •Actual colors of products and colors of this catalog may a little different cause of printing.

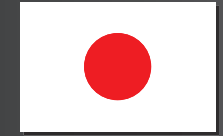
**HONDA ELECTRONICS CO., LTD.**  
 Medical Division  
 20 Oyamazuka, Oiwa-cho, Toyohashi  
 Aichi 441-3193, Japan  
 TEL: +81-532-41-2514 FAX: +81-532-41-4441  
 en.honda-el.co.jp/

Registered company for ISO9001/ISO13485/ISO14001 **CE**

is the trademark of HONDA ELECTRONICS CO., LTD.  
 This catalog is printed by vegetable ink on recycle paper.

23-094

February 14, 2024



**MADE IN JAPAN**



# Ultrasound Imaging Device for Veterinary Use

## HS-103V

### Features

1. Multi frequency / High Density (HD) Probe
2. Battery powered
3. Doppler functions
4. Cine-loop functions
5. Measurement functions



### Multi frequency / High Density (HD) probe

Unique probe developed by Honda Research Team. Three frequencies can be independently selected according to the depth of the diagnosis site.



Probe : HLV-275M  
Frequency : 10.0 / 7.5 / 5.0 MHz  
Width : 50 mm  
Length of cable : 1.8 m

Probe : HCS-236M  
Frequency : 5.0 / 3.5 / 2.8 MHz  
Radius : 60 R  
Length of cable: 1.2 m

\* It is scheduled to launch in March 2024  
\* Specified probe is hardwired to units. (no probe connector)

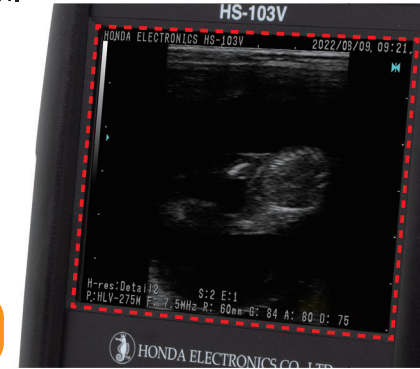


### 1 LCD Screen Bonding Technology



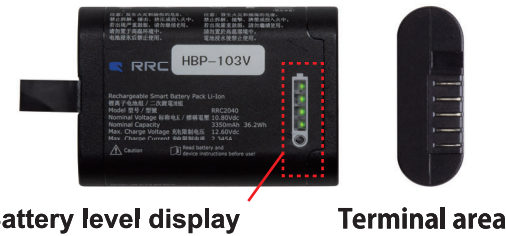
Enhanced image brightness and LCD Screen Bonding improve visibility and prevent screen condensation.

LCD Brightness  
1000 cd/m<sup>2</sup>



### 2 Battery powered

Battery provides approximately 3 hours of continuous operation. An LED confirms the remaining battery charge level.



Battery level display

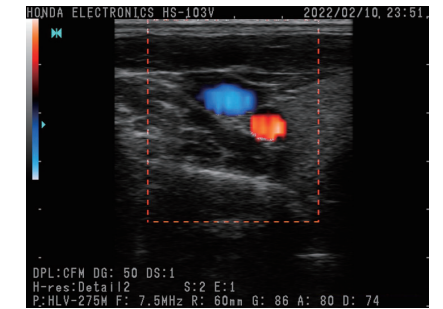
Terminal area



Connect the AC adapter to the main unit to charge the battery.

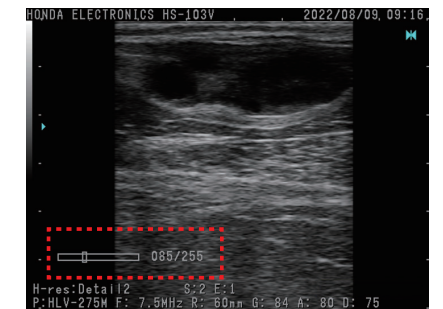
### 3 Doppler functions

Color Flow Mapping (CFM) and Power Doppler (PD) functions allow observation of blood flow around the corpus luteum (CL) as well as other patient anatomical organs.



### 4 Cine-loop functions

Up to 255 frames can be played back. Images can be saved according to the optimum frames.



### 5 Measurement functions

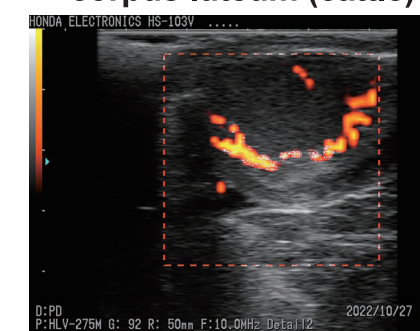
The size of the fetus and corpus luteum can be measured.



#### Pregnancy image (cattle)



#### Blood flow image for corpus luteum (cattle)



#### Pregnancy image (sow) 20 days

